



AMS eHub Service

Why entrepreneurship?

Consultation



Services Review Results

50% of students rated support in entrepreneurship/starting a business as 'important' or 'very important'

Students identified gaps in support services for entrepreneurship for students outside of Sauder



Why eHub and why the AMS?

Filling the gap

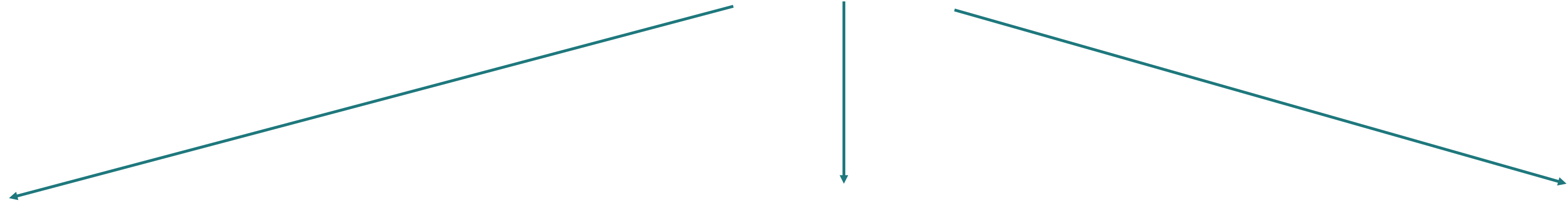
The First 15% of student's entrepreneurial journey

Career Exploration

**Socially-orientated
enterprises**

**Early Stage
Assessment**

E-Hub



Consults

Peer Advising

Resources



Curriculum

Workshops

Curriculum

Community Partners

Jobs



Community

UBC Tech Network

Career Services

Student Network

Business Clubs

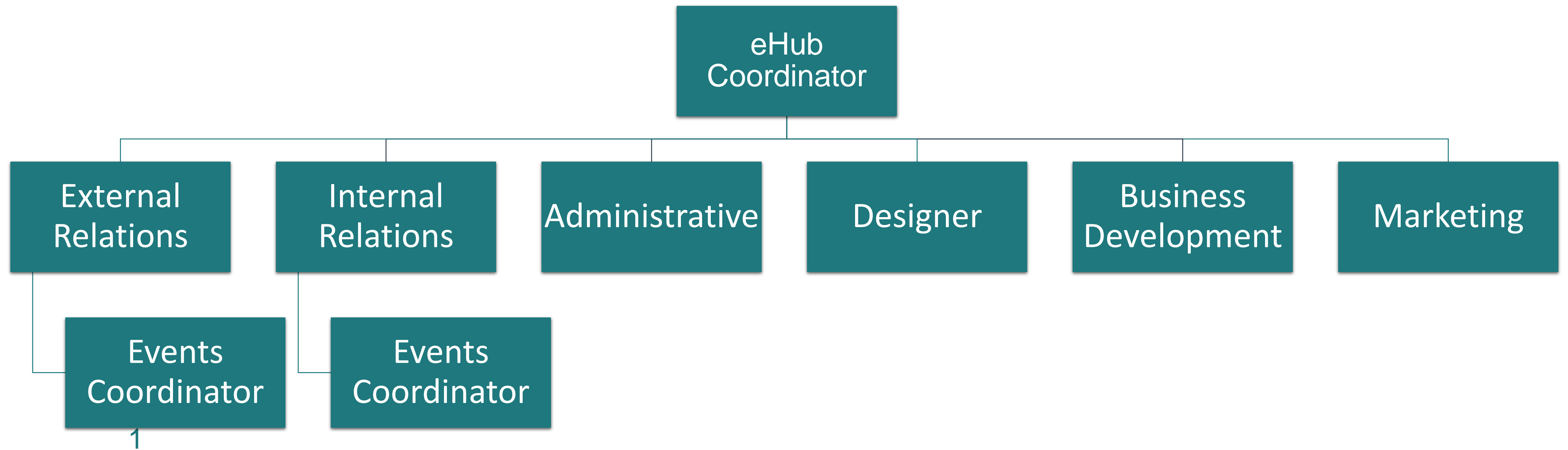


Financial Feasibility



eHUB Service	Budgeted
Expense:	
Salaries (Coordinator)	\$ 13,686.40
Benefits	\$ 958.05
Telephone/Fax	\$ 600.00
Miscellaneous Expense	\$ 50.00
Office Supplies & Postage	\$ 50.00
Photocopying & Administrative	\$ 25.00
Furniture & Equipment	\$ 500.00
Events	\$ 5,000.00
Special Project	\$ 500.00
Revenue	
e@UBC Funding	\$ (5,000.00)
Sponsorship Funding	\$ (2,500.00)
Total	\$ 13,869.45

Organization Chart



eHub Timeline

01

February 2017

Development of
Curriculum Structure

03

April 2017

- **Developments of Consults**
- **Solidifying Partnerships**

02

March 2017

- **Applying for funding grants**
- **Finish Hiring**
- **Transition**

Questions?