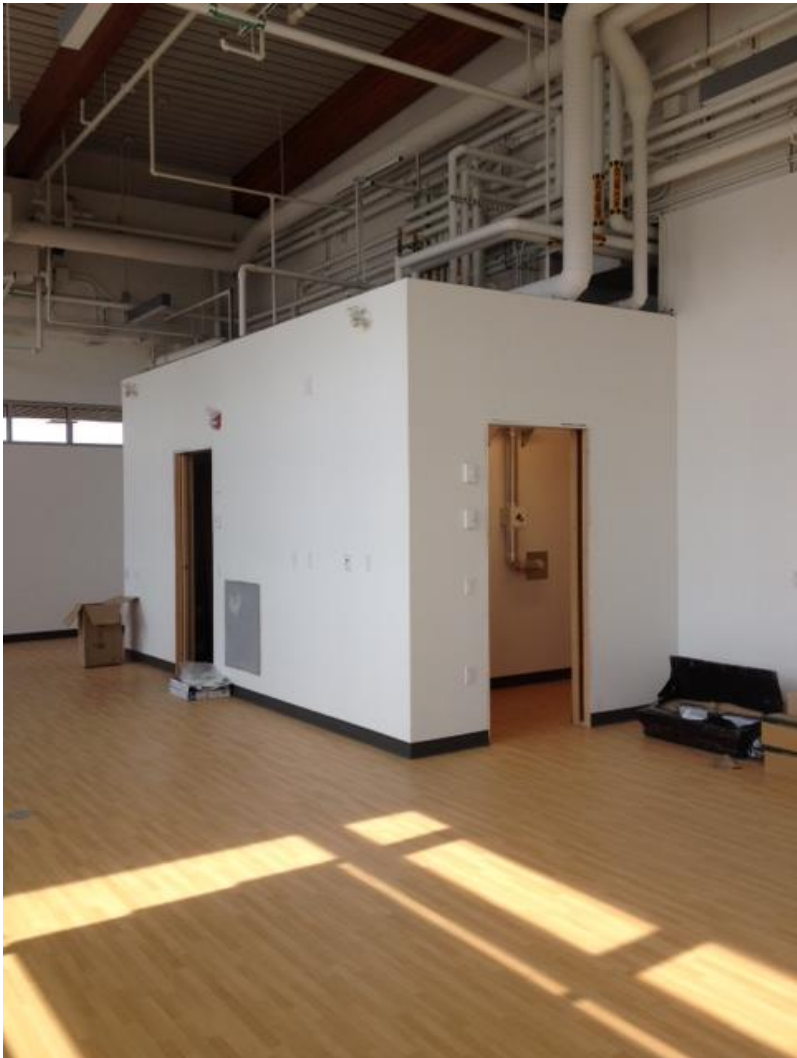


# NEST CHILDMINDING CENTRE A UBC / AMS PARTNERSHIP

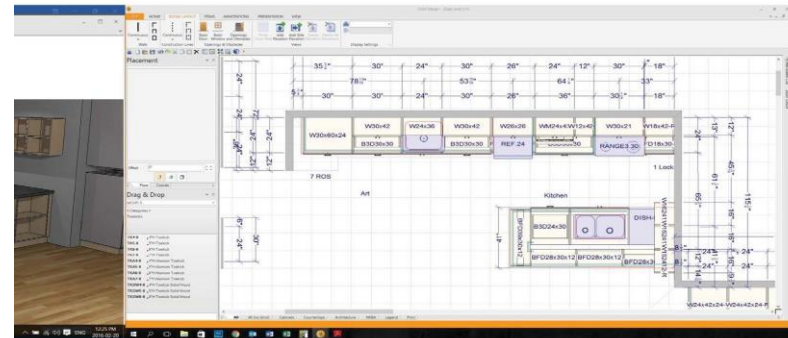
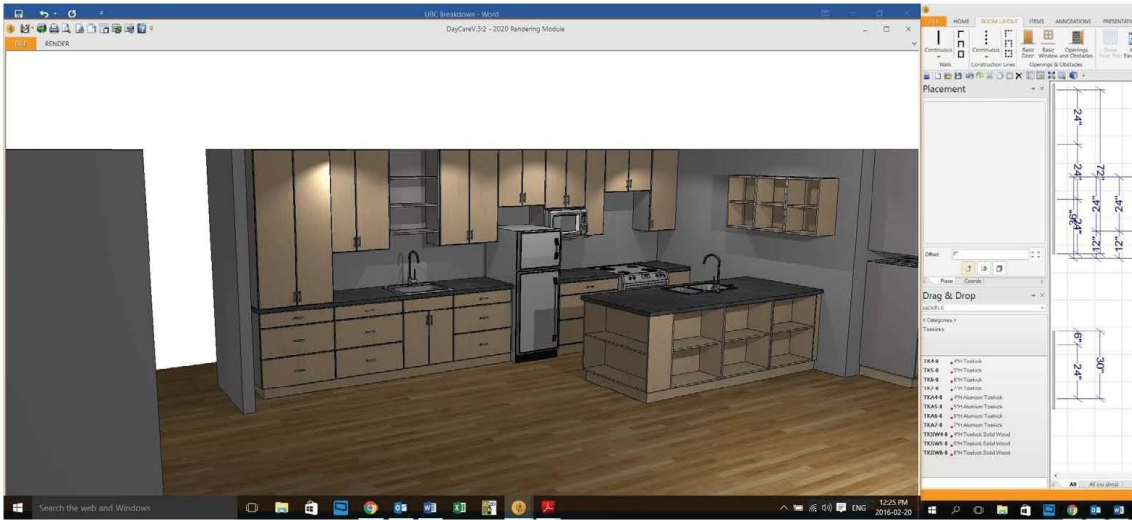
# UBC CHILDCARE & AMS HISTORY

- AMS HAS BEEN A MAJOR UBC CHILDMINDING FUNDING PARTNER FOR DECADES
- AMS CHILDMINDING FACILITY ORIGINAL BUDGET = \$585,000
- AMS NEST CONTRIBUTION = \$ 185,000
- UBC CHILD SERVICES NEST CONTRIBUTION = \$ 400,000
- UBC CHILDMINDING SERVICES IS AN ANCILLARY SERVICE AND DEPENDS ON MATCHING FUNDS TO DELIVER SERVICES
- CURRENTLY STUDENT UTILIZATION OF UBC CHILD SERVICES IS 38%
- STUDENT WILL HAVE 1<sup>ST</sup> PRIORITY ACCESS TO THE NEST CHILDMINDING FACILITY

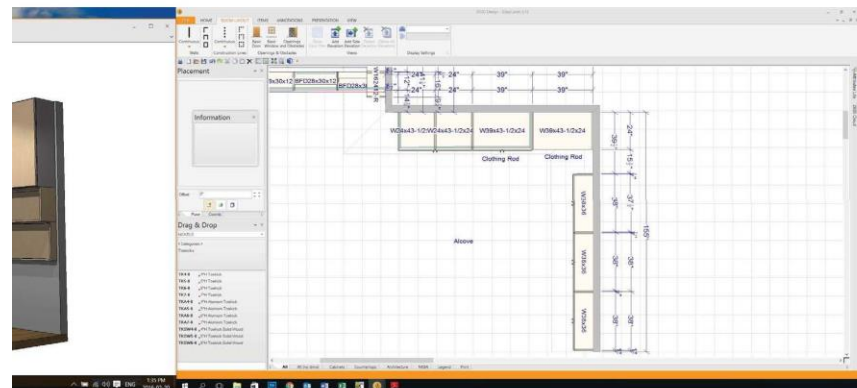
CURRENT SPACE IN NEST



# Kitchen



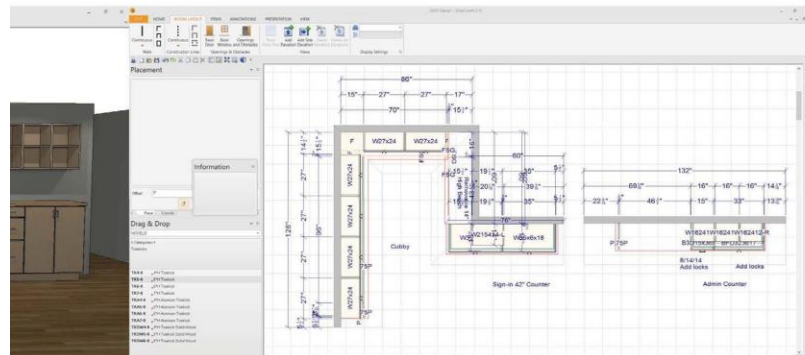
# Alcove:



# Entrance Cubbies, Sign-in Counter & Admin Counter:



## n Counter:



# CURRENT SITUATION + FUNDING REQUEST

- ORIGINAL COST SHARING MOU WAS BASED ON PRELIMINARY DRAWINGS
- BASE BUILDING HAS INCURED CONTROLLED COST OVERUNS  
SOUTH WALL GLAZING SOLAR TINT UPGRADE  
FLOORING MATERIAL UPGRADE TO IMPACT FLOORING
- COST TO FINISH FIT-OUT = \$80,000
- ASK IS FOR AMS TO CONTRIBUTE \$40,000
- UBC WILL CONTRIBUTE REMAINING \$40,000
- UBC ALSO COVERING COST FOR TOYS & MOVEABLE FURNISHING (~\$25,000).